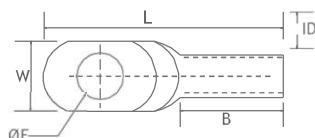


Copper tubular terminal ends- Heavy Duty One Hole 16 mm² to 800 mm²

- Material** : E-copper
Electro-tinned or uncoated
- Finish Features** : Available without inspection window part number starting with 'PCLU'
: Available in 45° and 90° barrel orientations
: RoHS compliant
- Notes** : ¹ Electro-tinned: ending with 'P', uncoated: ending with 'U' for use with copper flexible, stranded round compressed copper conductors and winding conductors
Wire sizes from 16mm² to 500mm² are UL listed

PART NO	CROSS-SECTION MM ²	ØE	ID	W	L
PCLSE-16-6		6.5		13	34
PCLSE-16-8	16	8.5	6	13	34
PCLSE-16-10		10.5		16	38
PCLSE-16-12		13		22	47
PCLSE-25-6	25	6.5	8	16	39
PCLSE-25-8		8.5		16	39
PCLSE-25-10		10.5		17	42
PCLSE-25-12		13		22	47
PCLSE-35-6	35	6.5	9	18	47
PCLSE-35-8		8.5		18	47
PCLSE-35-10		10.5		18	47
PCLSE-35-12		13		22	52
PCLSE-50-6	50	6.5	11	21	50
PCLSE-50-8		8.5		21	50
PCLSE-50-10		10.5		21	50
PCLSE-50-12		13		21	53
PCLSE-50-16		17		27	59
PCLSE-70-6	70	6.5	13	25	55
PCLSE-70-8		8.5		25	55
PCLSE-70-10		10.5		25	55
PCLSE-70-12		13		25	58
PCLSE-70-16		17		28	64
PCLSE-95-8	95	8.5	15	29	69
PCLSE-95-10		10.5		29	69
PCLSE-95-12		13		29	69
PCLSE-95-16		17		29	69
PCLSE-120-10	120	10.5	17	32	73
PCLSE-120-12		13		32	73
PCLSE-120-16		17		32	73
PCLSE-150-10	150	10.5	19	36	80
PCLSE-150-12		13		36	80
PCLSE-150-16		17		36	80
PCLSE-150-20		21		36	87

POWERCONNECT COMPONENT



Copper tubular terminal ends- Heavy Duty series – One Hole 16 mm² to 800 mm²

- Material** : E-copper
Electro-tinned or uncoated
- Finish** : Available without inspection window part number starting with 'PCLSF'
- Features** : Available in 45° and 90° barrel orientations
RoHS compliant
- Notes** : ¹Electrotinned: ending with 'P', uncoated: ending with 'U' for use with copper flexible, stranded round compressed copper conductors and winding conductors
Wire sizes from 16mm² to 500mm² are UL listed

PART NO	CROSS-SECTION MM ²	ØE	ID	W	L
PCLSE-185-10	185	10.5	21	39	86
PCLSE-185-12		13		39	86
PCLSE-185-16		17		39	86
PCLSE-185-20		21		39	93
PCLSE-240-10	240	10.5	24	42	96
PCLSE-240-12		13		42	96
PCLSE-240-16		17		42	96
PCLSE-240-20		21		42	96
PCLSE-300-10	300	10.5	24.5	45	116
PCLSE-300-12		13		45	116
PCLSE-300-16		17		45	116
PCLSE-300-20		21		45	116
PCLSE-300-24	25	45	116	116	
PCLSE-400-BL	400	0	30	56	125
PCLSE-400-12		13		56	125
PCLSE-400-16		17		56	125
PCLSE-400-20		21		56	125
PCLSE-400-24		25		56	125
PCLSE-500-BL	500	0	33	61	160
PCLSE-500-12		17		61	150
PCLSE-500-16		17		61	150
PCLSE-500-20		21		61	150
PCLSE-500-24		25		61	150
PCLSE-630-BL	630	0	39	75	195
PCLSE-630-20		21		75	195
PCLSE-630-24		25		75	195
PCLSE-800-BL	800	0	42.5	75	195
PCLSE-800-24		25		75	195