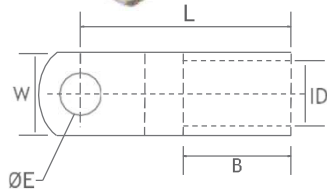


## Copper tubular terminal ends- Standard Series- Narrow 10 mm<sup>2</sup> to 300 mm<sup>2</sup>



- Material** : E-copper DIN EN 13600  
**Finish** : Electro-tinned or uncoated  
**Features** : Available without inspection window part number starting with 'PCLWN'  
 RoHS compliant
- Notes** : <sup>1</sup> Electro-tinned: ending with 'P', uncoated: ending with 'U' for use with copper cable conductors to DIN VDE 0295  
 Wire sizes from 16mm<sup>2</sup> to 500mm<sup>2</sup> are UL listed

PART NO	CROSS-SECTION MM <sup>2</sup>	ØE	ID	W	B	L
PCLV-N-35-6	35	6.5	8.5	15	17	32
PCLV-N-35-8		8.5		15	17	32
PCLV-N-50-6	50	6.5	10	15	19	37
PCLV-N-50-8		8.5		17	19	37
PCLV-N-50-10		10.5		19	19	39
PCLV-N-70-6	70	6.5	12	17	21	43
PCLV-N-70-8		8.5		17	21	43
PCLV-N-70-10		10.5		19	21	44
PCLV-N-70-12		13		19	21	46
PCLV-N-95-6	95	6.5	13.5	19	25	48
PCLV-N-95-8		8.5		19	25	48
PCLV-N-95-10		10.5		19	25	48
PCLV-N-95-12		13		19	25	49
PCLV-N-120-6	120	6.5	15	19	26	51
PCLV-N-120-8		8.5		19	26	51
PCLV-N-120-10		10.5		19	26	51
PCLV-N-120-12		13		19	26	56
PCLV-N-150-6	150	6.5	16.5	19	30	56
PCLV-N-150-8		8.5		19	30	56
PCLV-N-150-10		10.5		19	30	57
PCLV-N-150-12		13		19	30	65
PCLV-N-185-10	185	10.5	19	24.5	30	65
PCLV-N-185-12		13		31	30	65
PCLV-N-185-16		17		31	30	65
PCLV-N-240-10	240	10.5	21	31	35	72
PCLV-N-240-12		13		31	35	72
PCLV-N-240-14		15		31	35	72
PCLV-N-240-16		17		31	35	72
PCLV-N-300-10	300	10.5	23.5	31	44	87
PCLV-N-300-12		13		31	44	87
PCLV-N-300-14		15		31	44	87
PCLV-N-300-16		17		31	44	87